

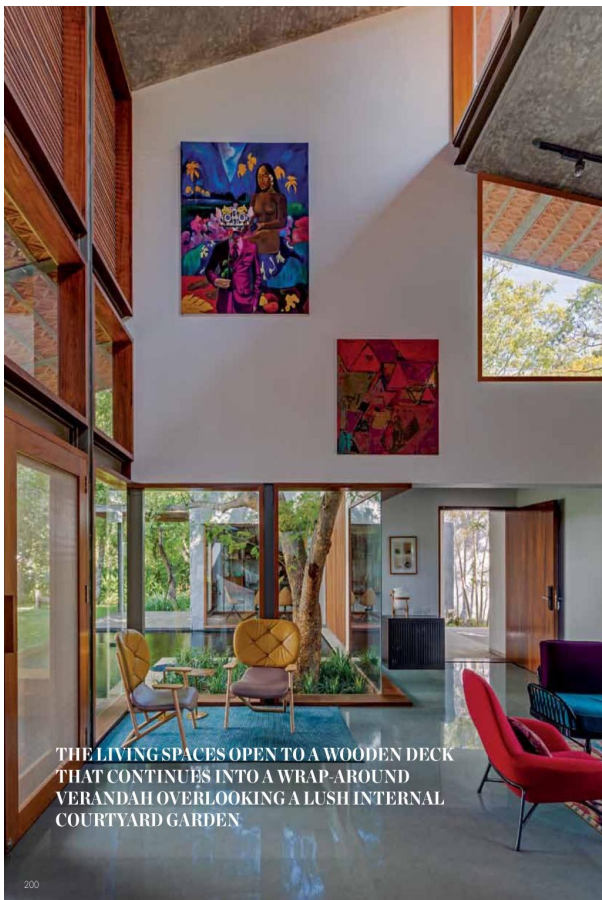


EARTH BOUND

Envisioned by Sandeep Khosla and Amaresh Anand, this villa impresses with its seamless spatial flow and natural, picturesque perils.

TEXT BY SANDEEP KHOSLA. PHOTOGRAPHS BY SHAMANTH PATIL. J. COURTESY: KHOSLA ASSOCIATES

The burnt orange staircase is sculpted out of mild steel with timber treads by Khosla Associates. The chandelier is the epitome of the responsive living space. Most fabric pendant lights from Brooklyn design house Rich Brilliant Willing illuminate the entertaining area below. The long lounge by Khosla Associates (manufactured by Young Furniture), low table in wood from Sagar Handa, red Prince armchairs from Misoni, leather chairs by Piv and handwoven ikat carpet from La Mill make an eclectic ensemble. While the glass Moebius table is from Objekt, the Ball Table light is a Tom Dixon piece.



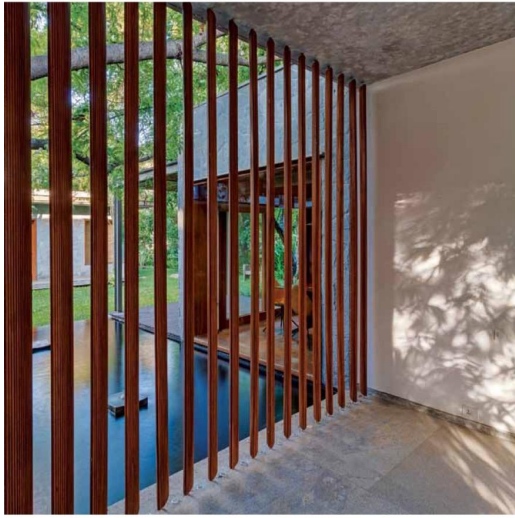
THE LIVING SPACES OPEN TO A WOODEN DECK THAT CONTINUES INTO A WRAP-AROUND VERANDAH OVERLOOKING A LUSH INTERNAL COURTYARD GARDEN.



This being a rare 16,000 sq ft site in Bengaluru surrounded by many mature trees, we felt the need to create an architectural marvel in harmony with the natural environs – inspired by the vernacular, contextual in its materiality, yet peppered with international style markers in its interior treatment. We arrived at a structure of sloping Mangalore tiled roofs and rough cut Sira stone walls contrasted with floors of kota and joinery of teak. In the semi open foyer a series of vertical ribbed timber louvers provide a gentle, filtered divider between the threshold of the house and the garden beyond. The entrance leads to a grand living space, 25 ft in height, with two stants of its roof separated by a clerestory window. Its verticality is emphasised by large floor-to-ceiling windows as well as an arresting burnt orange spiral staircase sculpted out of a shell of mild steel with timber treads. Large overhangs on the South West protect against the harsh afternoon sun while horizontal timber louvers provide for natural cooling via a stack effect and act as sun breakers. The living spaces open to a wooden deck that continues into a wrap-around verandah overlooking a lush internal courtyard garden.

The internal courtyard garden with a large figpond and an old tree emerging from within. Overlooking the pond is the study with Ottoma chairs by Karim Rashid for BoConcept Ltd. In a corner of the living room, facing the swimming pool, rest two Klera armchairs by Patricia Urquiola for Moroso on an indigo handloom carpet from Jaipur Rug. Above this setup are paintings by Shivkumar and Suresh Kumar, both Bengaluru based artists.

HOME BENGALURU



Internally, the large swathes of gray kota contrast with a bright colour palette. The bold ikat patterned carpet provides a vibrant base on which pieces by Moroso, Minotti, Riva and Poliform sit alongside other furniture custom designed by Khosla Associates. The central cluster of Mori fabric pendant lamps were sourced from Brooklyn based design house Rich Brilliant Willing, complemented by other light fixtures by Tom Dixon and renowned American artist and landscape architect Isamu Noguchi. While the butterfly sculpture "Secret Garden" on the wall, is by Mumbai based artist Sunil Gawde, other paintings were done by local contemporary artists Shivkumar and Suresh Kumar.

The spatial flow takes into consideration the family's requirement of segregating public and private areas. While the ground floor has living, study, dining, puja, home theatre, kitchen and two guest rooms, the upper level has three bedrooms, a meditation space and family room. On the side facing the garden, the study and the living rooms flow into their respective verandahs that hug a large pebbled fishpond. An existing tree emerges from the water and is uniquely framed by the built form on three sides. ♦



The dining room in tones of wood and honey is attached to Gotta Visan open kitchen from Woodville. Above the dining table custom-made by Khosla Associates and manufactured by Virasp Batliwala, hangs a cluster of Cali Pendant lights by Tom Dixon. While the chairs are past EDOA winner Ayon Kashwal's creations, the rug is Urbak kilim from Carpet Cellar.

Near the semi open entrance: The vertical ribbed timber louvers form a translucent screen between the foyer and the water body, garden and beyond. Each louver has a unique bi-convex shape with a ribbed texture, and further supported by steel spacers at the base as well as the ceiling.



HOME BENGALURU

The powder room on the ground floor is fitted with fixtures from Grohe, Tulip basin from Azzura from FCM, personalized wood and Corian counter and a mirror designed by Khosla Associates, manufactured by Virasp Batliwala. The artwork on the left is by local painter Rudransh Kanti.

Designed by Khosla Associates and manufactured by Virasp Batliwala, the four poster bed in the master bedroom paints a picture of serenity and symmetry, covered in linen and cushions from Sanku Hande. Next to the bed is a table lamp from Crate and Barrel and custom side table. The painting on the wall by Mumbai artist Nishu Bhattacharjee and Shiraz kilim from Carpet Cellar imbue the alcove with adequate amounts of colour.