

india

# mondo

arc

THE MAGAZINE FOR DESIGNERS WITH LIGHT #02 2015

₹500



# HUES TO MUSIC

*Crafting a dramatic musical experience in a theatrical spatial volume rendered in the histrionics of dynamic light, **Khosla Associates** design a barn in the middle of a populated Indian metropolis.*



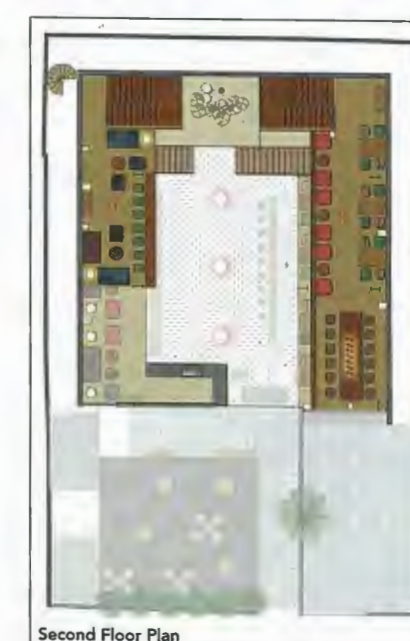
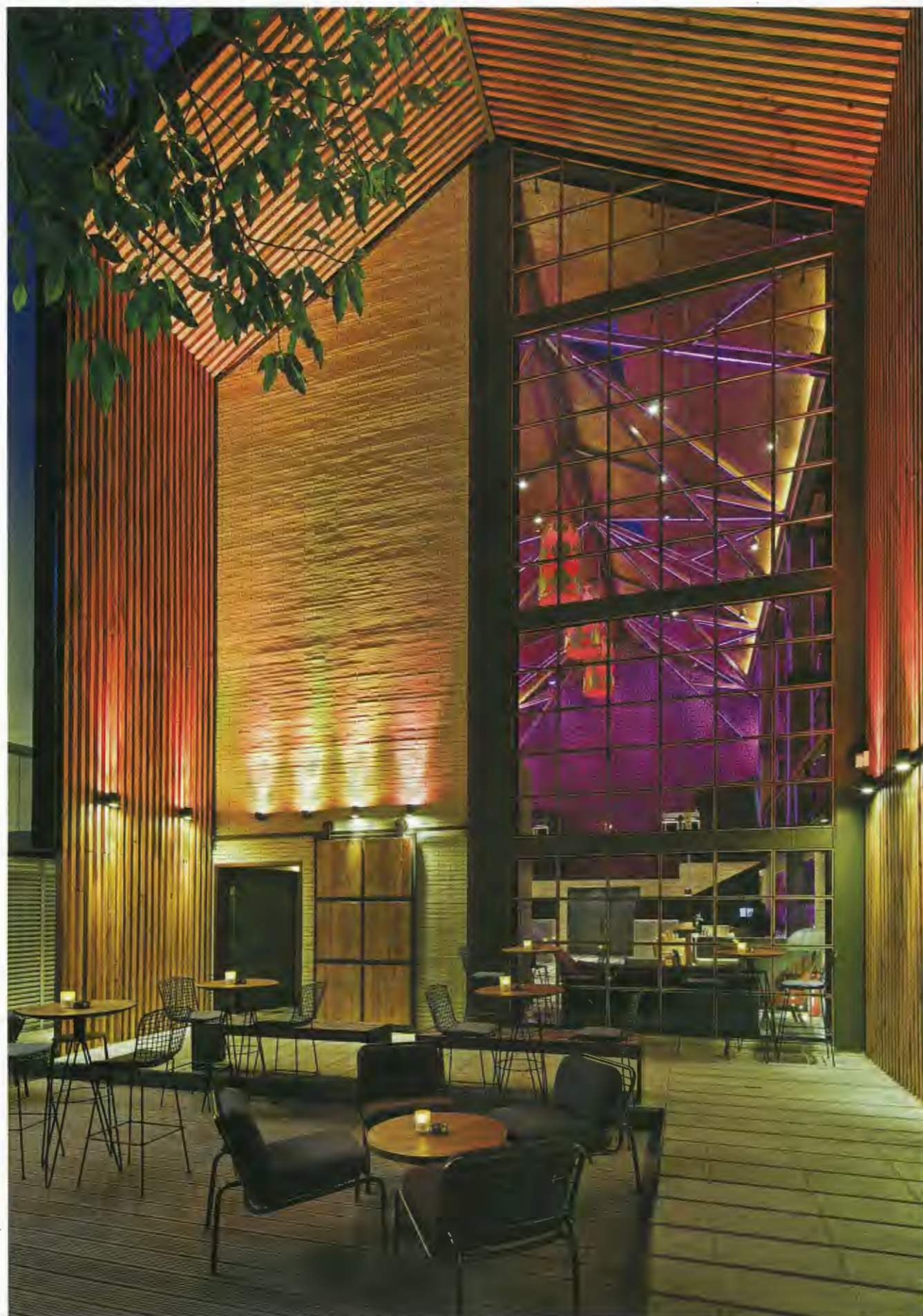
Mimicking traditional barn architecture, Loft 38 stands tall with a staggering voluminous interior and overriding gable roof. Khosla Associates not only designed this astounding building, but conceived an entertainment hub on one of Bangalore's prime high streets. Advising their client, GK Hospitality on the positioning of this venue, they envisioned a high-energy space for music lovers that would cater to the turntables of a variety of DJs. Contemporizing the architectural typology to adapt to a more theatrical space, multiple levels were inserted into the volume in a manner that encourages a seamless interaction with one another.

Keeping the atrium free of obstruction, lounge and dining areas flank the space on either side and at different heights. Sight lines were kept uncluttered and direct, from the stage at one end to the DJ console at the other. While putting pen to paper and conceptualizing the space at Loft 38, Khosla Associates initiated the lighting scheme to visualize volumes and ambience. Inextricably linking architectural moves and lighting of those moves, the designers explored a dynamic lighting scheme for the sizeable space. While large windows bathe the internal volumes with natural light in the day, as evening progresses the mood is

conjured to pre-set lighting at various levels and hues. Several rounds of deliberations resulted in the desired colour washes for feature elements, just the right amount of light on table surfaces to read a menu, and perfect accents to highlight strong architectural and spatial components. Catering to large volumes of patrons, especially on weekends, it was imperative to employ a smart but sophisticated lighting program in the space. While the intricate terrazzo flooring of the dance floor was highlighted, the 38 ft. high open atrium volume was kept more or less uniformly lit, drawing the eye to the back of the space defined by the astounding rear stage

57.





wall. Standing firm from floor to ceiling, composed of stacked sections of rustic timber logs, it references firewood heaped in a barn. Acting as a backdrop for the entire volume, the impressive vertical surface commanded an extraordinary approach to lighting it. The architects customised fittings in conjunction with manufacturers, Cona Lighting to create a wide and even wash of light that would craft an ethereal persona for the highly textured wall.

Looking further upwards, the plywood ceiling, propped up with a complex system of steel trusses was emphasised in a wash of colour changing light. An interesting wooden

detail was developed to house a gentle cove in the cavity of the I Section. LED strips placed precisely within the hollow, allowed underscoring the linearity of the girders that divide the space longitudinally. A similar detail incorporated within the staircase hand rail provides for LED strips to wash each tread, thus rendering the 12mm thick bent metal sheet in soft washes of horizontal light.

An eclectic mix of stylised furniture, bespoke fittings and dynamic lighting allows for the venue to host casual dining as well as lounge spaces. Catering to varying energies in the day and night, Loft 38 is easily transformed from a relaxed ambience

to a rigorous acoustic experience. And for those seeking respite from the internal audio levels, the dramatic interior volume steps out into a calm and intimate open-to-sky courtyard with its own bar and seating. [www.khoslaassociates.com](http://www.khoslaassociates.com)

#### PROJECT DETAILS

Official Name: Loft 38  
 Client: GK Hospitality  
 Architect: Khosla Associates; Sandeep Khosla, Amaresh Anand  
 Interior Designer: Khosla Associates  
 Lighting Specified: Cona Lighting Pvt. Ltd.